

Models EST-AH, EST-C EST-AH-(EXT) & EST-C-(EXT) Quick Setup Instructions

WARNING: Electrical and plumbing connections need to be made by a licensed service person and comply with all Federal, State and Local Health, Electrical, Plumbing and Safety codes.



NORMAL-OFF DELIMER SWITCH

ON/OFF POWER SWITCH

1 1/2" WATER INLET

MODEL EST REAR VIEW

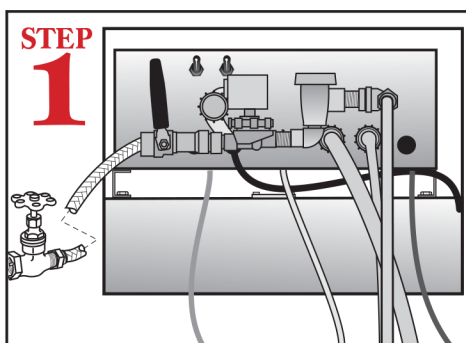


HARD WIRE POWER SUPPLY

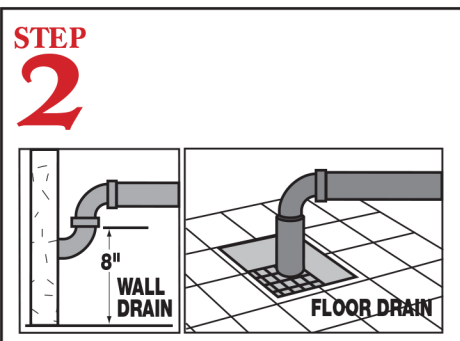
3 TUBE STIFFENER

3 CHEMICAL TUBING

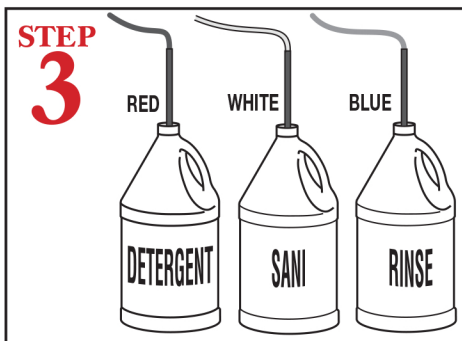
2 2" DRAIN OUTLET



Connect dishmachine to hot water source recommended 140 temperature (120 minimum temperature required).



Connect a 2" drain pipe (not supplied) from scrap accumulator to floor or wall drain.



Insert tube stiffener with chemical tubing into each corresponding chemical dispensers.

PN: 10130.13

11-2016



800.577.6202 • www.BCIchem.com