

*Finally, the most Reliable Undercounter is available with Pumped Drain & Tank Heat.*

## *ET Series*



*Pumped Drain*  
Allows installation in almost all applications.

*Screens*  
Dual screening protects both wash & drain pumps from debris.

*Optional Heat*  
Maintains Tank Temperature rack after rack.



### *Ergonomical Design*

Allows operators to load & unload with ease. Short door construction (10") keeps the aisle free and clear.

*Perfect for Restaurants, Bars, and Fast Food Operations.*

At American Dish Service, Quality People, Designs, and Products have been the foundations of our organization for over *45 years*.



**BCI**  
PROFESSIONAL

800.577.6202 • [www.BCIchem.com](http://www.BCIchem.com)

# ET Series

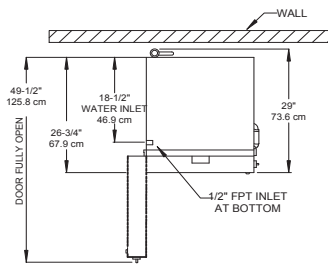
## MULTI-USE UNDERCOUNTER DISHWASHERS

**ET... The Dishmachine of choice, when space is a concern. You will NEVER AGAIN have to sacrifice production or results.**

- 1 1/2 HP Wash & Rinse Pump
- 90 Second Complete
- Reliable Tank Heat (Sustained) Time Cycle
- Automatic Chemical Dispensing
- Optional Chemical Alarms
- Pump Drains Water (up to 20")
- Dual Screening Catches Debris
- Available 3" Taller Version



**Operating a free standing complete ware-washing center in only 48" of space. To do this, combine our ET-AF Undercounter with our stainless steel table package.**

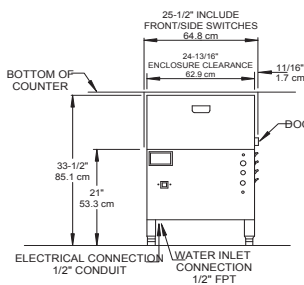


TOP VIEW

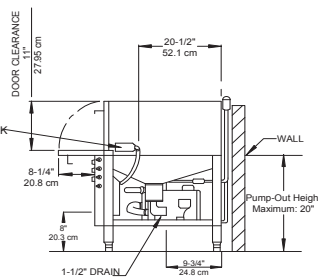
**CAUTION:**  
Electrical and plumbing connections must be made by a qualified Service Person who will comply with all available federal, state, and local Health, Electrical, Plumbing, and Safety codes.

\*Manufacturer reserves the right to modify these specifications in compliance with regulatory agencies and manufacturing expediency.

**NOTE:**  
All dimensions listed have a tolerance of + or - 1/8" unless otherwise noted.



FRONT VIEW



SIDE VIEW

Effective: 4/16

**American Dish Service**  
Manufacturers of Ware Washing Equipment  
WWW.AMERICANDISH.COM



### ET SERIES with PUMPED DRAIN and HEAT SPECIFICATIONS

	FAMILY MODELS
	ET-AF ET-A ET-AH
NSF RATED CAPACITY (Racks/Hr.)	30 24 20
WASH TIME (Sec.)	45 60 75
RINSE TIME (Sec.)	30 45 60
DWELL (Sec.)	15 15 15
TOTAL CYCLE TIME (Sec.)	90 120 150
WATER TEMPERATURE-SUPPLY WATER	(NSF) 120 F Min. 49 C Min.
WATER CONSUMPTION (NSF RATED)	1.7 Gal's Per Cycle 6.4 Lit's Per Cycle
MOTOR RATING (PUMP)	1.5 HP
DRAIN MOTOR RATING	1.125 KW
SUSTAINER HEATER	1/20 HP (.037 KW) 1/2 KW
ELECTRICAL RATINGS (NEC)	115 Vac, 20amp brk, 50/60Hz, 1Phase
Connect to Supply Source using 10-12 AWG copper wires using non-time delay fuse of 20 amp rating or 20 amp circuit breaker.	
RACK SIZE	19.75" x 19.75" 50.2 cm x 50.2 cm
DOOR CLEARANCE	*M Series: 11" x 22.25" (27.9cm x 56.5cm) *3 Series: 14" x 22.25" (35.8cm x 57cm)
WATER INLET	1/2" FPT
DRAIN SIZE	3/4" I.D. Hose by 60" Long
PUMP-OUT HEIGHT (Maximum)	20"
HEIGHT OF STANDARD ET	Min 33.5" -Max 34.5" 85.1 to 87.6 cm
HEIGHT OF ET-AF-3	Min 36.5" -Max 37.5" 92.7 to 95.2 cm
WIDTH (Overall)	25.5" 64.8 cm
DEPTH (Overall)	29" 73.6 cm
SHIPPING WEIGHT	*M Series: 270 Pounds (122.5 kg) *3 Series: 274 Pounds (124.3 kg)
SHIPPING DIMENSIONS	*M Series: 36"L x 36"W x 41"H *3 Series: 36"L x 36"W x 44"H

Copyright 4/16

**BCI**  
PROFESSIONAL

800.577.6202 • www.BCIchem.com

ADS has built a strong history based on Customer Service, Quality, and Reliability. A Commitment to Excellence is the driving force behind American Dish Service.