

# ES Series by

The Energy Star “**Green**” Machine  
Doing Our part for Energy & Water Conservation

*ES Series*

LOWEST  
ENERGY STAR  
RATING OF ITS  
CLASS.....

.936 Gal/Rack



**ES = Energy Savings**  
**37 Racks/ 34 Gallons/ Per Hour**  
**Powerful 1 1/2 HP Pump**  
**Large Door Opening 20 1/2”**  
**Dual Screens Protects the Pump**

*Same Great Quality*  
*Same Great Results*  
*Just Less Water, Energy, & Chemicals*



At American Dish Service, Quality People, Designs,  
and Products have been the foundations of our  
organization for over **45 years**.



**BCI**  
**PROFESSIONAL**

800.577.6202 • [www.BCIchem.com](http://www.BCIchem.com)

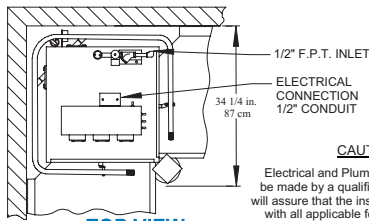
# What can an **ENERGY STAR** qualified commercial dishwasher save in your establishment?

“Each **ENERGY STAR** qualified commercial dishwasher can save businesses about 90 Mbtu’s, and average of \$850/year on their energy bills. In addition, businesses can expect to save more than \$200/year and 52,000 gallons/year due to reduced water usage.”

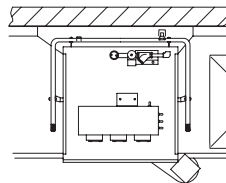
- **Cleans 37 Racks Per Hour**
- **Convertible Design**
- **20 1/5” Door Clearance**
- **Simple to Clean**
- **Stainless Steel Air Gap**
- **Powerful 1 1/2 HP Pump**
- **Large Capacity Scrap Accumulator**



Available as a Straight-Thru, Corner, or 3-Doors-Up



**TOP VIEW**  
CORNER APPLICATION



**TOP VIEW**  
IN-LINE APPLICATION

**CAUTION:**  
Electrical and Plumbing connections must be made by a qualified Service Person who will assure that the installation is in compliance with all applicable federal, state, and local Health, Electrical, Plumbing, and Safety Codes.



## AF/AFC-ES Series

	AF-ES	AFC-ES
<b>RATED CAPACITY (Racks/Hour)</b>	37	25
<b>WASH TIME (Sec.)</b>	50	60
<b>RINSE TIME (Sec.)</b>	30	45
<b>DWELL (Sec.)</b>	10	15
<b>TOTAL CYCLE TIME (Sec.)</b>	90	120

**WATER TEMPERATURE (Supply)** 120° F Min.  
49° C Min.  
**WATER CONSUMPTION** .936 Gal's Per Cycle  
3.543 Liters Per Cycle

**MOTOR** 1.5 HP  
1.125 KW  
**ELECTRICAL RATINGS** 115 Volts  
Single Phase

Connect to Supply Source using 10-12 AWG copper wires. Circuit Protection: 20 AMP Circuit Breaker or Fuse with a 20 AMP Rating.

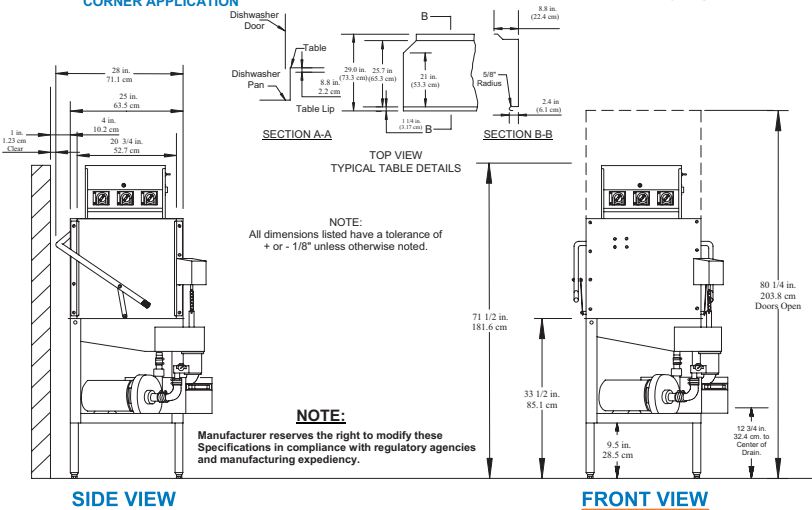
**RACK SIZE** 19 3/4" x 19 3/4"  
50.2 cm x 50.2 cm  
**DOOR CLEARANCE** 30 3/4" x 20 1/2"  
52.7 cm x 52.1 cm

**WATER INLET** 1/2" F.P.T.  
**DRAIN (Scrap Trap)** 2" Pipe  
**HEIGHT (Door Open)** 80 1/4"  
203.8 cm

**HEIGHT (Door Closed)** 71 1/2"  
181.6 cm  
**WIDTH (Overall)** 33 1/2"  
85.1 cm

**WIDTH (Table to Table)** 25"  
63.5 cm  
**DEPTH (Overall)** 34 1/4"  
86.9 cm

**SHIPPING WEIGHT** 295 lb.  
133.8 kg.  
**SHIPPING VOLUME** 56.25 cu. ft.  
1.59 cu meters



**SIDE VIEW**

**FRONT VIEW**

Effective: 04/2009

© American Dish Service

ADS has built a strong history based on Customer Service, Quality and Reliability. A Commitment to Excellence is the driving force behind American Dish Service.