

Model 5AG-ES by

HIGH CAPACITY "GREEN" MACHINE



Model 5AG-ES

**ENERGY STAR
RATED AT
LESS THAN
1 GALLON PER RACK**

**Double Duty Model. Features
20 1/2" door opening, air-gap
fill, dual screening. Washes
74 racks per hour with two
powerful 1 HP Pumps.**

**Wash Sheet Pans Horizontally with
the optional Pan Rack**



At American Dish Service, Quality People, Designs,
and Products have been the foundations of our
organization for over *45 years*.

www.americandish.com



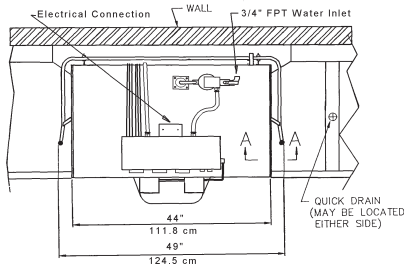
BCI
PROFESSIONAL

800.577.6202 • www.BCIchem.com

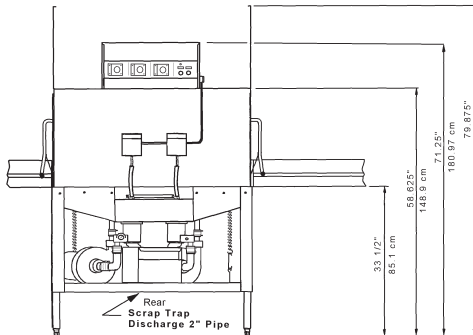
Model 5AG-ES

**SAME GREAT QUALITY
SAME GREAT RESULTS
JUST LESS WATER, ENERGY,
& CHEMICALS**

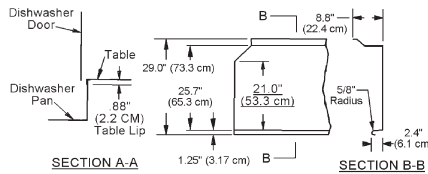
- Cleans 74 racks per hour
- Water consumption of **LESS than 1 gallon per rack**
- Great door clearance at 20 1/2"
- Top mount controls with auto start
- Stainless steel air gap
- Quick release spray arms
- Two high capacity 1 HP pumps
- Door safety switch - external prime switches
- Delime switch located in the control panel



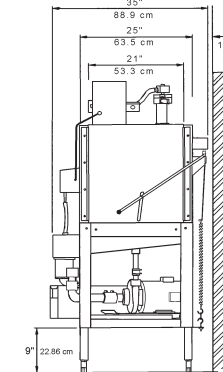
TOP VIEW



FRONT VIEW



TOP VIEW
TYPICAL TABLE DETAILS



SIDE VIEW

NOTE:
*Manufacturer reserves the right to modify these specifications in compliance with regulatory agencies and manufacturing expediency



ADS
American Dish Service
Manufacturers of Ware Washing Equipment

Model 5AGES Specifications



UL US LISTED

RATED CAPACITY (Racks Per Hour)	74	66	46
WASH TIME (Sec.)	50	60	75
RINSE TIME (Sec.)	7	45	60
DWELL (Sec.)	15	15	15
TOTAL CYCLE TIME (Sec.)	90	120	150

WASH TANK CAPACITY (Min.)	1.78 Gallons 6.74 Liters
WATER TEMPERATURE	120 Deg. F Min. 49 Deg. C Min.
WATER CONSUMPTION	1.78 Gallons Per Cycle 6.74 Liters Per Cycle
MOTOR (2)	1.0 HP .75 KW
ELECTRICAL RATINGS	116 Volts 18 Amp Single Phase

CONNECT TO ELECTRICAL SUPPLY SOURCE
Using 10-8 AWG Copper Wire
Circuit Protection: 30 AMP Circuit Breaker
or Fuse with a 30 AMP Rating

RACK SIZE (2)	19 3/4" x 19 3/4" 60.2 x 50.2 cm
DOOR CLEARANCE	20 1/2" x 21" 52.07 x 53 cm
WATER INLET	3/4" FPT
DRAIN (Scrap Trap)	2" Pipe
HEIGHT (Doors Open)	78.875"
HEIGHT (Doors Closed)	71.25"
WIDTH (Overall)	49"
DEPTH (Overall)	124.5 cm ... 34"

Effective: 3/2011

© 3/2011

ADS has built a stron
A Commitment to E:



BCI
PROFESSIONAL

800.577.6202 • www.BCChem.com