

ADC-66 Conveyor by

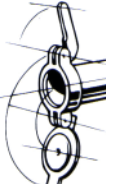
HIGH or LOW temp the ultimate choice...

- **Reliable pre-wash**
- **Unrivalled cleaning ability**
- **Best performance of all listed 66" conveyors**
- **Rated for dual sanitizing**
- **66% less water than industry average**
- **244 racks per hour - .49 gallons water per rack**
- **Auto II and shut-off standard**

Water Curtain Rinseability

- activates prior to final rinse
- initiates the rinsing process and acts as a shield

- *lips open, snaps shut*
- *quick fast clearing of spray arms*
- *shortens the cleaning process & eliminates down time*



Captive end caps

Dual - Fail Safe Heater Control

- *precise water control mechanism*
- *only allows heaters to operate when tank is full*
- *unaffected by heavy soil, water action, strong chemicals, and lime build up*

Fail - Safe Conveyor System

- *slip clutch design - stops rack movement*
- *once removed operation easily resumes*
- *eliminates damaged racks*



Drain Pump Filter

- *2 stage PUMP STRAINER*
- *eliminates wash pump obstructions and clogged jets*
- *functions as drains stopper*



Pre-Wash Scrap Basket

- *V construction*
- *keeps soil in tray*
- *protects pump*

At American Dish Service, Quality People, Designs, and Products have been the foundations of our organization for over **45 years**.



BCI
PROFESSIONAL

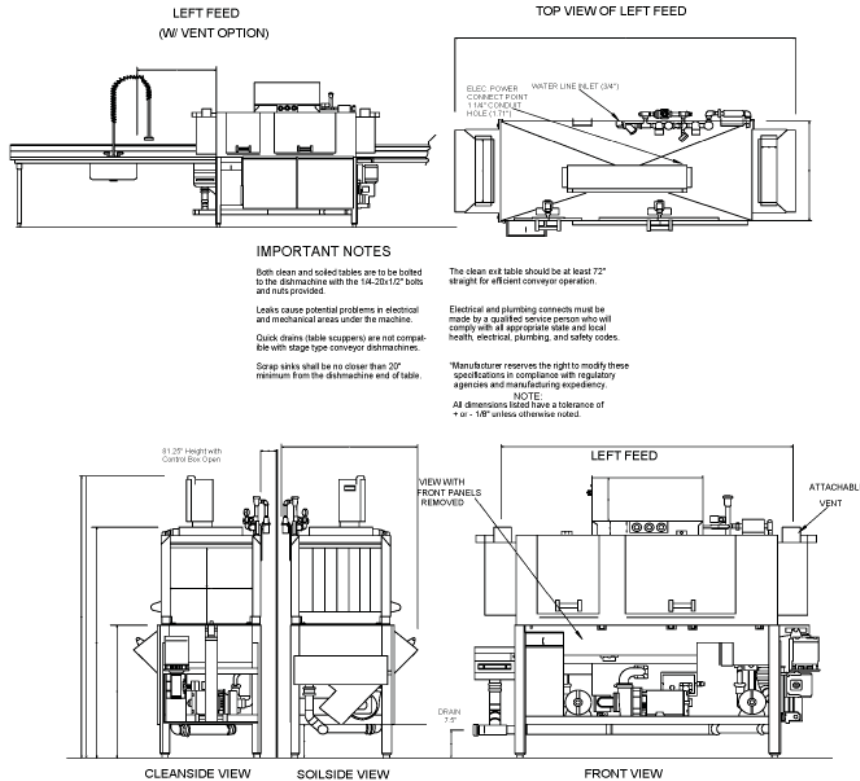
800.577.6202 • www.BCIchem.com

ADC-66 Conveyor



- Deep "V" Scrap Tank
- Auto Fill / Auto Start / Shut-off
- Safety Shut-off Scrap Pump
- Overflow Scraping Feature
- Captive Endcaps
- Patented Water Control
- Water Curtain for Final Rinse
- 3 HP Wash Pump,
1.5 HP Scrap Pump
- 244-Racks per Hour,
- 49 Gallons per Rack

Effective 7/02



Model ADC-66 Specifications

ADC-66	FAMILY MODELS (left or right feed)	ADC-66	ADC-66
	ADC-66	HOT TEMP	CHEMICAL
NSF RATED CAPACITY	244 rack/hr	244 rack/hr	244 rack/hr
CONVEYOR SPEED	6.8 ft/min or 2.07 meters	6.8 ft/min or 2.07 meters	6.8 ft/min or 2.07 meters
WATER CONSUMPTION	49 gal/rack or 1.8 liters	49 gal/rack or 1.8 liters	49 gal/rack or 1.8 liters
TOTAL GAL. PER HR.	120 gph or 454.2 liters	120 gph or 454.2 liters	120 gph or 454.2 liters
FINAL RINSE TEMP (20 psi)	180 F / 82.2C	120 F / 48.8 C	120 F / 48.8 C
SANITIZER	180 WATER	50ppm CHLORINE	
ELECTRICAL POWER SUPPLY	200-240V, 3PH, 50 AMP, 60 HZ <small>2 phase motorized conveyor 2 phase motor with 2 1/2 phase heater min. 8000VA power and a clear circuit</small>		
MOTOR RATINGS	1.5 HP SCRAP, 3 HP WASH 1/3 HP RINSE, 1/3 HP CONVEYOR		
HEATER RATINGS	18 KW WASH, 2.25 KW RINSE		
RACK SIZE	STANDARD 16.75" X 19.75" or 50.2 x 50.2 cm		
ACCESS DOOR CLEARANCE	15" X 24.5" 38.1 X 62.2 cm		
RACK CLEARANCE (Through Machine)	19.25" x 20.75" 48.9 x 52.7 cm		
WATER INLET	(3/4)" F P.T.		
DRAIN SIZE	(2)" F P.T.		
HEIGHT (with door open)	73.75"		
	(81.25" or 206.3 cm with control box cover open)		
WIDTH (overall)	86"		
	218.4 cm		
WIDTH, TABLE TO TABLE	66"		
	167.6 cm		
DEPTH	34.5"		
	87.6 cm		
SHIPPING WEIGHT	900 POUNDS 435.4 kg		
SHIPPING VOLUME (crated)	153 CU. FT. 4.3 cu meters		

Effective: 04/11

WWW.AMERICANDISH.COM

© 1002

ADC has built a strong history based on Customer Service, Quality and Reliability. A Commitment to Excellence is the driving force behind American Dish Service.