

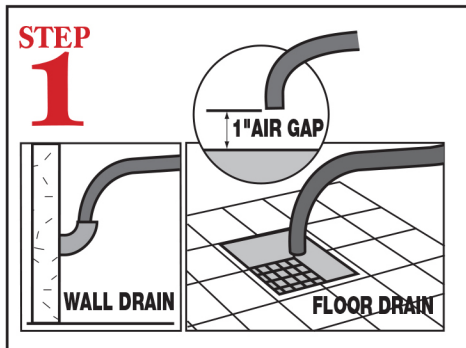
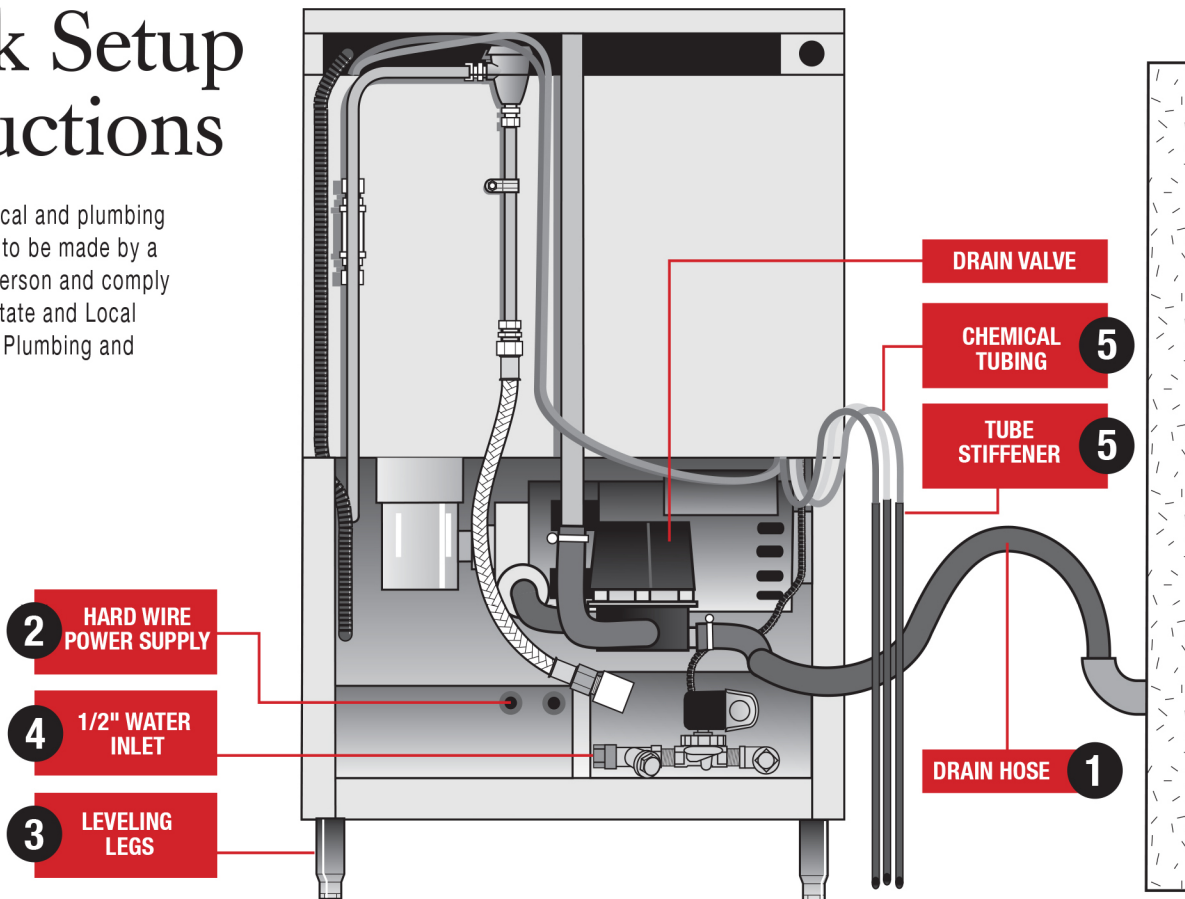
# GL-X

## Quick Setup Instructions

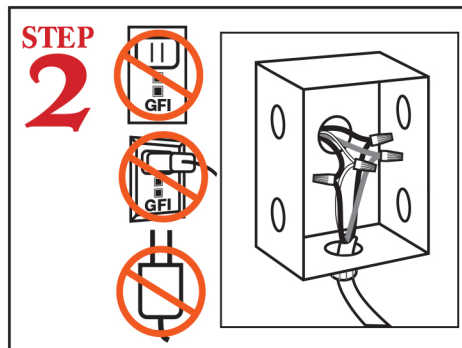
### GL-X REAR VIEW



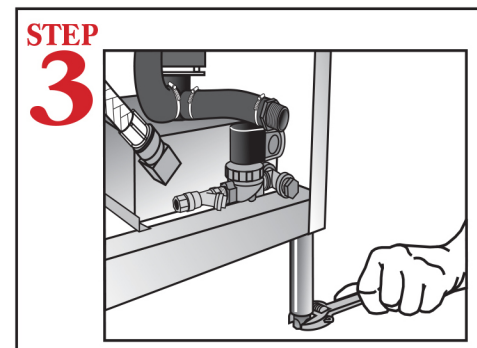
**WARNING:** Electrical and plumbing connections need to be made by a licensed service person and comply with all Federal, State and Local Health, Electrical, Plumbing and Safety codes.



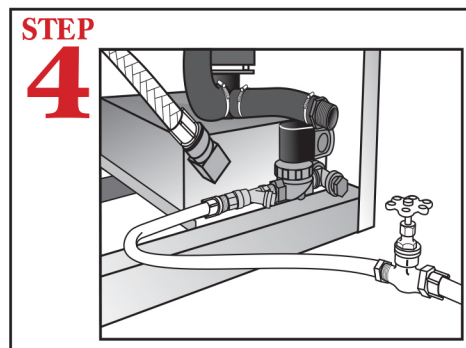
Connect the drain hose to wall or floor drain. The floor drain must have a 1 inch air gap between drain hose and floor drain.



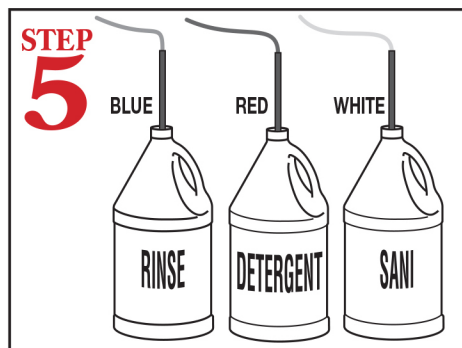
**DO NOT USE POWER CORD OR GFI OUTLET.** This unit **MUST BE** hard-wired to a dedicated appropriately size circuit breaker.



Level dishmachine by adjusting leveling legs. Dishmachine must be level front and back to ensure proper performance.



Connect dishmachine to hot water source, recommended 140° (120° minimum temperature required) using a 1/2" connector.



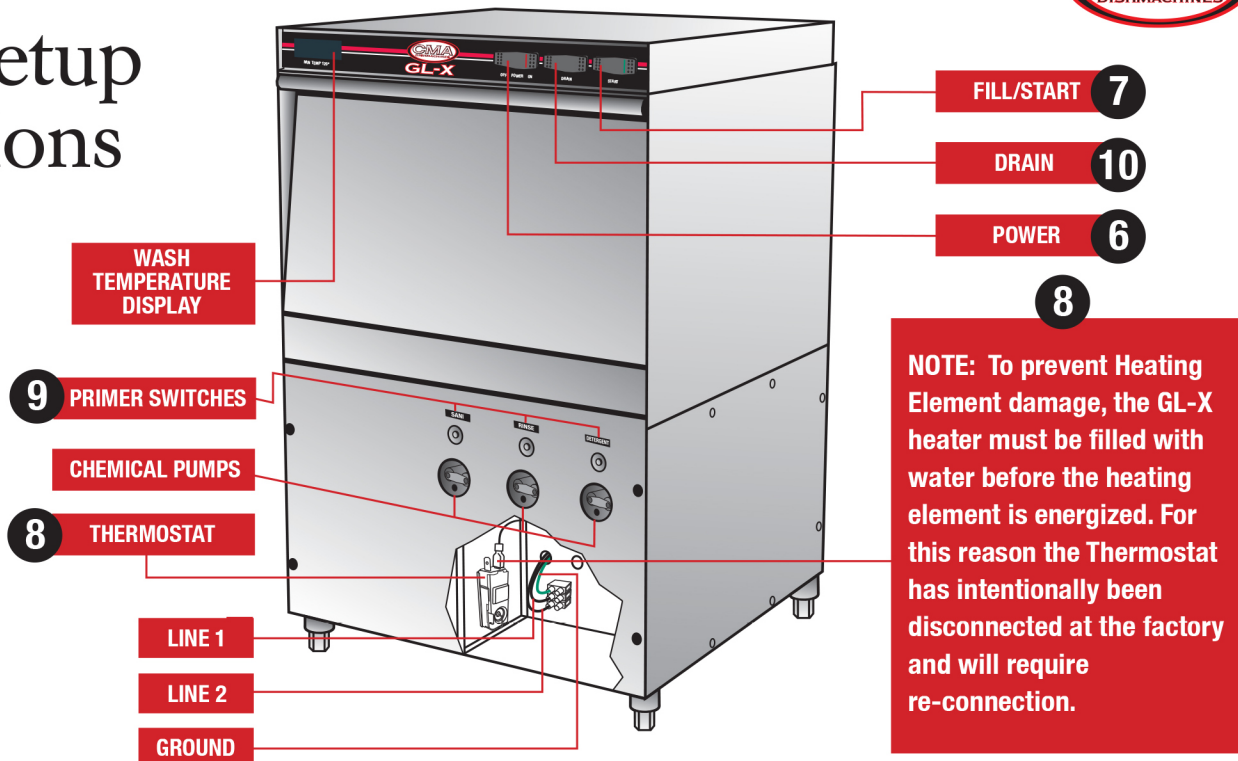
Insert tube stiffener with chemical tubing into corresponding chemical dispensers.

# GL-X Quick Setup Instructions

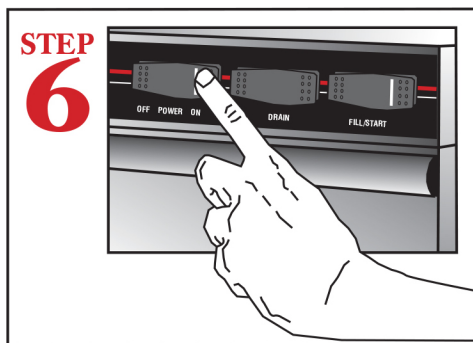
GL-X FRONT VIEW



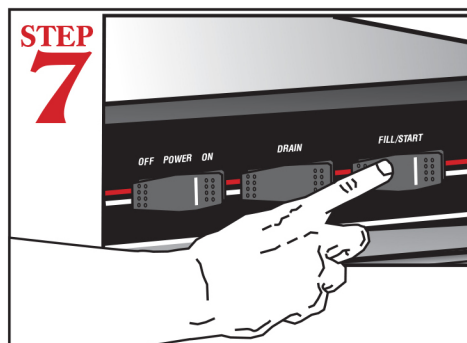
**WARNING:** Electrical and plumbing connections need to be made by a licensed service person and comply with all Federal, State and Local Health, Electrical, Plumbing and Safety codes.



**NOTE:** To prevent Heating Element damage, the GL-X heater must be filled with water before the heating element is energized. For this reason the Thermostat has intentionally been disconnected at the factory and will require re-connection.

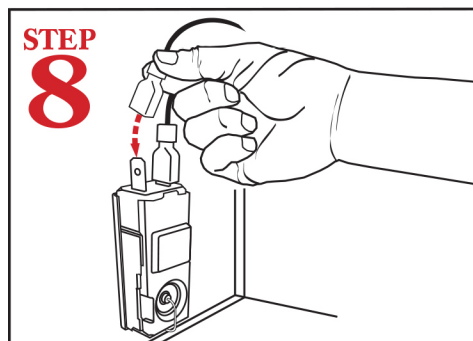
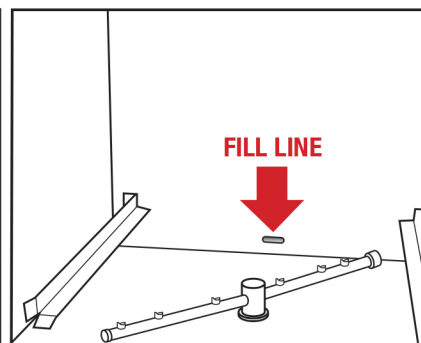


Turn Power Switch to "ON" position.

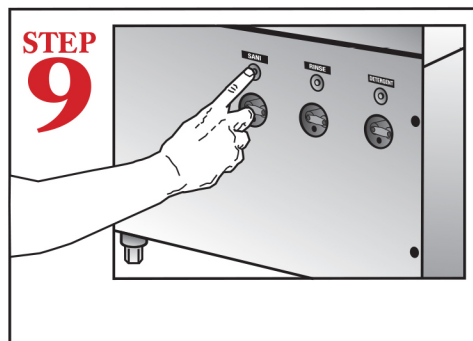


Hold down "FILL" Switch for approximately 10 - 15 seconds to allow water to flow into the dishwasher. Water should reach "FILL LINE" which is located inside at the back of the wash tank. Close door, then press "START" switch.

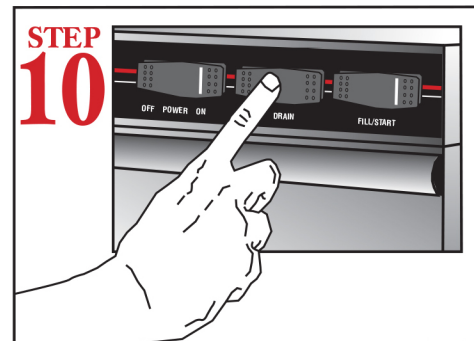
**NOTE:** The 4th cam of timer assembly has to be adjusted to maintain the same water level during the cycle.



Reconnect thermostat wire. Set temperature at 120°F - 140°F.



Press and hold down "SANI", "DETERGENT" and "RINSE" switches to prime chemicals. This step must be repeated each time chemical containers are changed.



Push "DRAIN" switch to empty machine.