



EST-44/44TALL

High Temperature
Low Temperature
44" Conveyor Dishwasher



Available as Right or Left. (must specify)



Available as Right or Left. (must specify)

FEATURES:

- ENERGY STAR® Approved.
- Automatic water control system.
- 249 racks / 996 covers per hour.
- Economical to operate. Uses only .46 gallons of water per rack of dishes.
- Single control switch activation.
- Power rinse heater system.
- Unique 3-stage washing process provides wash, power rinse and final rinse all in a 44" machine.
- Automatic soil purging system filters wash water and traps plate debris into an external tray. Tray can be easily removed for cleaning.
- All stainless steel construction offers durable performance and years of trouble-free operation.
- Chemical resistant industrial heaters are proven to be more durable than commercial grade heaters.
- Large 19" opening accommodates larger items and utensils (EST-44).
- Large 25" opening accommodates larger items and utensils (EST-44 TALL).
- Auto start/stop makes operation more energy efficient.
- Easy to remove and replace curtains for cleaning.
- Includes table limit switch and rack saver clutch system that protects the machine, dishracks and table from damage.
- Stainless steel chemical injection chamber.

Available Options

- Corner Feed Table (left or right must specify)
FACTORY INSTALLED ONLY
- Vent Hood with 4" x 16" Vent and Damper Control (2 per set) P/N: 13901.82
- Stainless Steel dishtables
- Drain Water Tempering Kit P/N: 13470.10
- "E Temp" CMA booster heater(40° and 70° rise)
FACTORY INSTALLED ONLY
- Hatco Booster Heater also available (specify voltage & phase)
- Scrap Trap Single Drain Connection Kit P/N: 01321.00
- 208V-240V / 480V
- Sheet Pan Rack P/N: 1154.00
- 6" EXT height accommodates pots and pans and larger sheet pans
- Exhaust Fan Control P/N: 13578.00
- **Note: E-Temp not available single phase 70° rise.**
- **Note: E-Temp standard voltage 208-230V three phase**



800.577.6202 • www.BCIchem.com

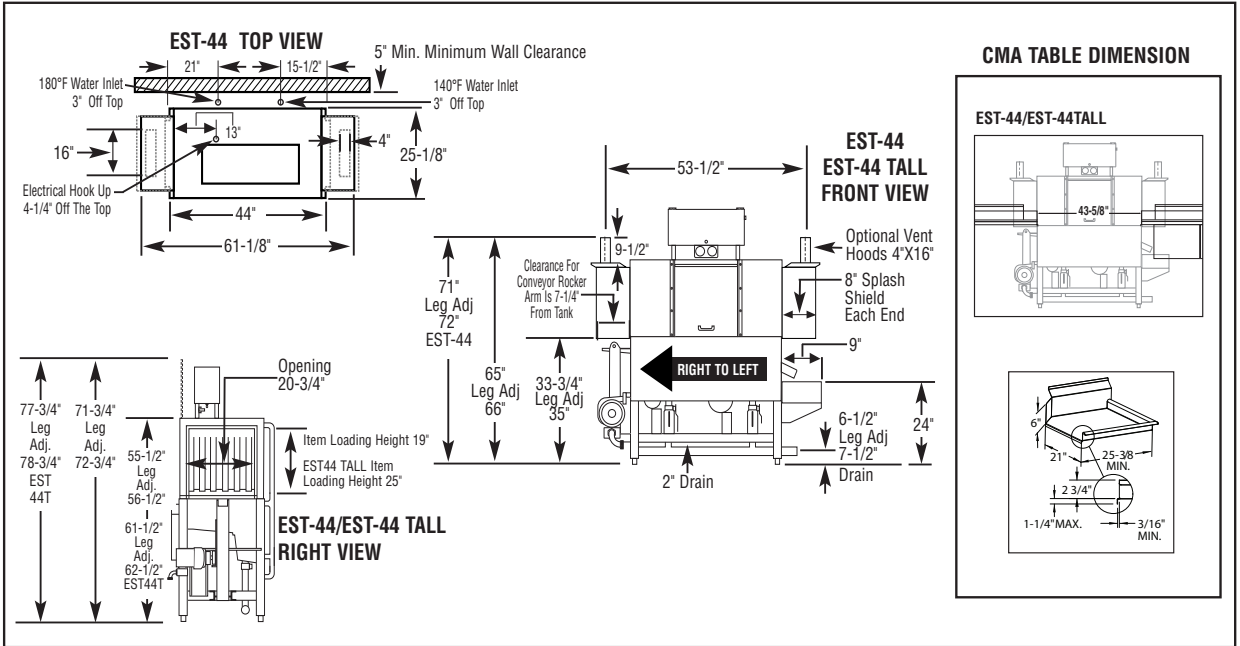


EST-44/44TALL

High Temperature
Low Temperature
44" Conveyor Dishwasher

WARNINGS:

- Plumbing connections must be made by a qualified service company who will comply with all available Federal, State, and Local Health, Plumbing and Safety codes.
- Water hardness above 3 grains per gallon should be treated by a water softener. Failure to provide soft water (3g or less) will void the machine warranty.



Specifications:

MODEL EST-44/44TALL H/L	USA	METRIC	USA	METRIC
OPERATING CAPACITY RACKS PER HOUR (NSF RATED)243	249	249		
CONVEYOR SPEED	6.75 FT./MIN.	(206 CM/MIN.)		
WASH PUMP MOTORS HP	1	1		
RINSE PUMP MOTOR HP	1/3	1/3		
CONVEYOR MOTOR HP	1/8	1/8		
WATER INLET - FILL	1/2"	(1.27cm)		
WATER INLET - FINAL RINSE	1/2"	(1.27cm)		
DRAIN SIZE	2"	(5.1cm)		
FINAL RINSE PRESSURE	20 ± 5psi	(1.41 kg/cm ²)		
WASH TANK CAPACITY EST-44/EST-44T				
PRE-RINSE	4.25 GAL	(16.0 L)		
WASH	11.75 GAL	(44.5 L)		
TOTAL	16.0 GAL	(60.5 L)		
WASH PUMP CAPACITY				
EACH	52 GPM	(197 LPM)		
OPERATING TEMPERATURE EST-44				
WASH	150°F-160°F	(66°C/71°C)		
PUMPED RINSE	160°F	71°C		
FINAL RINSE	180°F-195°F	(82°C/90°C)		
OPERATING TEMPERATURE EST-44				
WASH RECOMMENDED	140°F-150°F	(60°C/68°C)		
PUMPED RINSE RECOMMENDED	140°F-150°F	(60°C/68°C)		
FINAL RINSE RECOMMENDED	140°F-150°F	(60°C/68°C)		
WATER CONSUMPTION				
PER RACK (FINAL RINSE)	0.46 GAL	(1.7 L)		
PER HOUR (FINAL RINSE)	114 GPH	(431 LPH)		
DIMENSIONS				
DEPTH EST-44/EST-44T	25-1/8"	(64cm)		
WIDTH EST-44/EST-44T	44"	(111.7cm)		
HEIGHT EST-44	55-1/2"-56-1/2"	(140.97-143.51cm)		
HEIGHT EST-44T	61-1/2"-62-1/2"	(156-159cm)		
STANDARD TABLE HEIGHT EST-44	34"	(86cm)		
MAX LOADING HEIGHT FOR ITEMS EST-44	19"	(48cm)		
STANDARD DISHRACK DIMENSIONS	1	1		
ENTRANCE END 200 MAX	19-3/4"X19-3/4"	(50X50cm)		
ELECTRICAL RATING	VOLTS	PHASE	AMPS	AMPS(TALL)
	208	1	71	N/A
	240	1	80	N/A
	208	3	55	60.5
	240	3	62.5	69
	480	3	24	27
WASH TANK HEATER	13kW @ 208V (3 PHASE), 13kW @ 240V (1 PHASE), 15kW@ 208V (TALL)			
RINSE TANK HEATER	3kW @ 220V			
SPECIFY DIRECTION OF RACK TRAVEL (RIGHT TO LEFT, LEFT TO RIGHT) WHEN ORDERING				
EST-44H EXHAUST VENTILATION REQUIREMENTS AT 100% CAPACITY CFM				
ENTRANCE END 200 MAX	DISCHARGE END 400 MAX	TOTAL CFM 600 MAX		
SHIPPING WEIGHT				
APPROXIMATE EST-44	662#			(300kg)
APPROXIMATE EST-44T	687#			(311kg)

Summary Specifications: Model EST-44 Conveyor

The Models EST-44H and EST-44L Chemical Sanitizing conveyor dishwashers meets ETL sanitation, UL₂ and CUL construction standards. The EST-44 performs three separate washing functions including a built-in power rinse, all in a 44" space. The EST-44 washes up to 249 racks per hour and uses a minimum .46 gallons of water per rack while achieving sparkling, clean, dry dishes. Constructed entirely of stainless steel.

Call For Available Models (800-854-6417 or See web-Site: www.cmadishmachines.com)

Advisory: CMA does NOT endorse "Tankless On-Demand" water heaters for use on CMA Dishmachine products. CMA DOES endorse, and highly recommends, the standard "tank" style water heaters, sized properly to handle each particular facility with their water heating requirements.

