

# "3D-S" Series by

## The SERVICEABLE Machine

**Greater  
Door  
Clearance**

Wash Taller Wares

**(Dual Screens)**

Protect intake of pump.

**(Quick Service Pump)**

Pump slides forward  
providing for easier repair.



**(Swift Plumbing Removal)**

All plumbing is connected  
using zero-interference  
Stainless/Terelene Couplers.



**AFC-3D-S**

Corner outside  
sump with built-in  
scrap accumulator

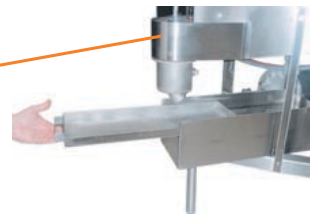
**(Air Gap fill)**

Eliminates the need for check  
valves and vacuum breakers



**(20.5" Door Clearance)**

Perfect for pizza  
applications.



**(Diagonal Scrap Trap)**

Provides easy screen removal  
in both corner and pass-  
through models

**Save time and money by reducing labor.**

*You can now machine wash that which was once washed by hand.*

At American Dish Service, Quality People, Designs,  
and Products have been the foundation of our  
organization for over **45 years**.



**BCI**  
**PROFESSIONAL**

800.577.6202 • [www.BCIchem.com](http://www.BCIchem.com)

# "3D-5" Series

**(Additional Options)**  
Also available with solid chemical dispensing



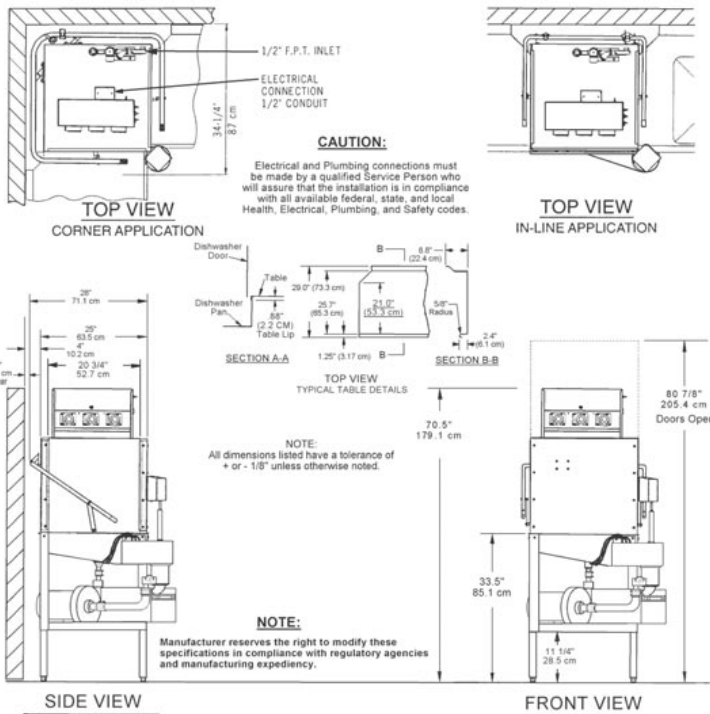
**(Stainless Steel Spray Bases, Bayonets, and Manifold Couplings)**  
Allows for quick release spray arm removal for ease of cleaning



- **Convertible Design**
- **Great door clearance 20.5"**
- **Quick Service 1 1/2 HP pump**
- **Quick release spray arms**
- **Stainless steel air gap**
- **Run indicator light**
- **Simple to clean**
- **Available with solid chemical dispensing**



**AF-3D-S**  
Pass-thru outside sump with built-in scrap accumulator



	FAMILY MODELS
	AF-3DS AH-3DS
	AFC-3DS AHC-3DS
RATED CAPACITY (Racks/Hr.)	37 23
WASH TIME (Sec.)	45 75
RINSE TIME (Sec.)	30 60
DWELL (Sec.)	15 15
TOTAL CYCLE TIME (Sec.)	90 150
WATER TEMPERATURE (Supply)	120 °F Min. 49 °C Min.
WATER CONSUMPTION	2.2 Gal's Per Cycle 8.3 Liters Per Cycle
MOTOR	1.5 HP 1.125 KW 115 Volts Single Phase
ELECTRICAL RATINGS	
Connect to Supply Source using 10-12 AWG copper wires. Circuit Protection: 20 AMP Circuit Breaker or Fuse with a 20 AMP Rating.	
RACK SIZE	19 3/4" x 19 3/4" 50.2 cm x 50.2 cm
DOOR CLEARANCE	20 3/4" x 20 1/2" 52.7 cm x 52.1 cm
WATER INLET	1/2" F.P.T.
DRAIN (Scrap-Trap)	2" Pipe
HEIGHT (Door Open)	80 7/8" 205.4 cm
HEIGHT (Door Closed)	70 1/2" 179.1 cm
WIDTH (Overall)	33 1/2" 85.1 cm
WIDTH (Table to Table)	25" 63.5 cm
DEPTH (Overall)	34 1/4" 86.9 cm
SHIPPING WEIGHT	295 lbs. 133.8 kg.
SHIPPING VOLUME	56.25 cu. ft. 1.59 cu meters